

GASARC™

AN ESAB® BRAND

SPEC MASTER HPT600 SERIES

6.0 Purity Two Stage Nickel Plated Brass Barstock Diaphragm Cylinder Regulator

Spec Master HPT600 series two stage diaphragm cylinder regulators are designed for primary pressure gas control of non-corrosive or toxic, high purity gases up to grade 6.0 purity (99.9999%), on applications where constant delivery pressure is required as the cylinder pressure decreases.

- **HPT601 Series** | Two Stage Diaphragm Cylinder Regulator, FFKM Pressure Relief Valve, FKM Seal
- **HPT602 Series** | Two Stage Diaphragm Cylinder Regulator, FFKM Pressure Relief Valve, EPDM Seal



★ FEATURES

- Six port configuration
- Front panel mounting capabilities
- Encapsulated seat design
- Low wetted surface area
- Full range of inlet and outlet fittings
- Base and side entry

📄 MATERIALS

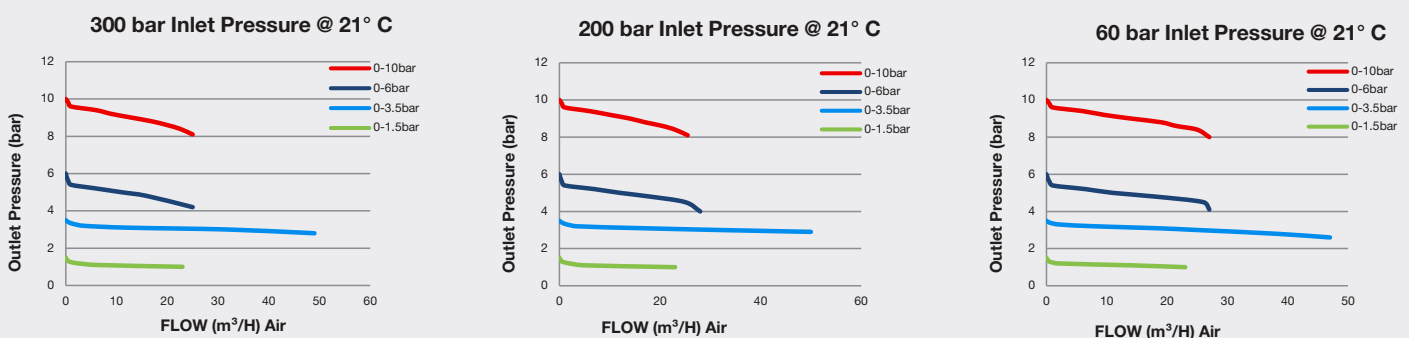
Body	Nickel Plated Brass Barstock
Bonnet	Nickel Plated Brass Barstock
Diaphragm	316L Stainless Steel
Seal	PTFE
Seat	PCTFE
Filter	10 Micron 316L Stainless Steel

* Subject to cylinder connection ** Cylinder connection not included

👍 SPECIFICATION

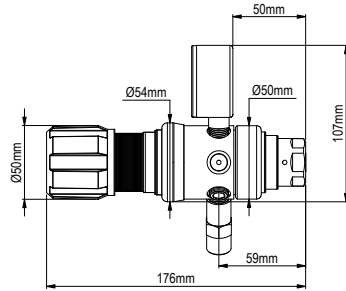
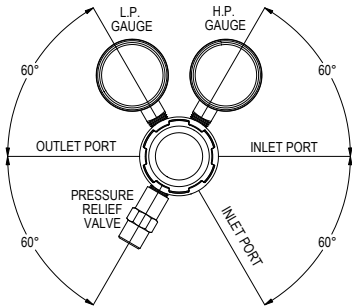
Maximum Inlet Pressure	60 bar (870 PSI) / 300 bar (4350 PSI)*
Delivery Pressure Range	1.5 bar (22 PSI) / 3.5 bar (50 PSI) / 6 bar (90 PSI) / 10 bar (150 PSI)
Gauges	50mm (2") Diameter
Ports	1/4" NPT Female
Temperature Range	-20° C to +60° C (-4° F to +140° F)
Flow Coefficient (Cv)	0.079
Helium leak Integrity	1 x 10 ⁻⁹ mbar l/s
Weight	2.0 kg (4.4 lb)**

✓ FLOW PERFORMANCE

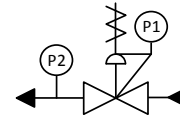




DIMENSIONS



PROCESS & INSTRUMENTATION



- Adjustable Pressure Regulator with P1 Pressure Gauge



- Pressure Relief Valve



- P2 Pressure Gauge

Model No. Selector Guide

Product Type	Inlet Pressure	Outlet Pressure	Inlet Pressure Gauge	Outlet Pressure Gauge	Inlet/Cylinder Connection	Outlet Connection	Options
HPT601	02 60 bar / 870 PSI	02 -1 - 1.5 bar / 22 PSIG	00 No Gauge Fitted	00 No Gauge Fitted	000 No outlet fitted	00 No Outlet Fitted	A No Options Selected
HPT602	04 300 bar / 4350 PSI	03 -1 - 3.5 bar / 50 PSIG	01 bar/PSI	01 bar/PSI	001 1/8 Stainless Steel Compression	01 1/8 Stainless Steel Compression	B Regulator Tee Purge FKM
		04 -1 - 6 bar / 90 PSIG	10 Plugged Port	10 Plugged Port	002 1/4 Stainless Steel Compression	02 1/4 Stainless Steel Compression	C Regulator Tee Purge EPDM
		05 -1 - 10 bar / 150 PSIG			003 6mm Stainless Steel Compression	03 6mm Stainless Steel Compression	F Bonnet Vent Capture Kit
					004 1/4 NPT Male	04 1/4 NPT Male	G Helium Test Certificate
					007 G3/8 BSP R/H Brass Male	07 G3/8 BSP R/H Brass Male	K Certificate of Conformity
					008 G3/8 BSP L/H Brass Male	08 G3/8 BSP L/H Brass Male	L Panel Mount Locking Nut Kit
					010 BS341 No.3	09 Isolation Valve, 1/4 NPT Female, FKM Seal	P Calibration/ Pressure Test Certificate
					012 BS341 No.4	10 Isolation Valve, 1/4 NPT Female, EPDM Seal	X Special Instruction
					015 BS341 No.8	11 Isolation Valve, 1/8 Stainless Steel Compression, FKM Seal	
					030 DIN447 No.6	12 Isolation Valve, 1/8 Stainless Steel Compression, EPDM Seal	
					033 DIN447 No.9	13 Isolation Valve, 1/4 Stainless Steel Compression, FKM Seal	
					034 DIN447 No.10	14 Isolation Valve, 1/4 Stainless Steel Compression, EPDM Seal	
					045 CGA320	15 Isolation Valve, 6mm Stainless Steel Compression, FKM Seal	
					052 CGA540	16 Isolation Valve, 6mm Stainless Steel Compression, EPDM Seal	
					053 CGA580	17 Isolation Valve, 1/4 NPT Male, FKM Seal	
					<small>For our complete range of cylinder connections refer to 'Cylinder Connections Data'</small>	18 Isolation Valve, 1/4 NPT Male, EPDM Seal	
						19 Isolation Valve, G3/8 BSP R/H Brass Male, FKM Seal	
						20 Isolation Valve, G3/8 BSP R/H Brass Male, EPDM Seal	
						21 Isolation Valve, G3/8 BSP L/H Brass Male, FKM Seal	
						22 Isolation Valve, G3/8 BSP L/H Brass Male, EPDM Seal	

GASARC™

AN ESAB® BRAND

SPEC MASTER HPT620 SERIES

6.0 Purity Two Stage Nickel Plated Brass Barstock Piston Cylinder Regulator

Spec Master HPT620 series two stage piston cylinder regulators are designed for primary pressure gas control of non-corrosive or toxic, high purity gases up to grade 6.0 purity (99.9999%), on applications where constant delivery pressure is required as the cylinder pressure decreases.

- **HPT621 Series** | Two Stage Piston Cylinder Regulator, FKM Seal
- **HPT622 Series** | Two Stage Piston Cylinder Regulator, EPDM Seal



★ FEATURES

- Six port configuration
- Front panel mounting capabilities
- Encapsulated seat design
- Low wetted surface area
- Full range of inlet and outlet fittings
- Base and side entry

📄 MATERIALS

Body	Nickel Plated Brass Barstock
Bonnet	Nickel Plated Brass Barstock
Piston	Brass
Seal	FKM / EPDM
Seat	PCTFE
Filter	10 Micron 316L Stainless Steel

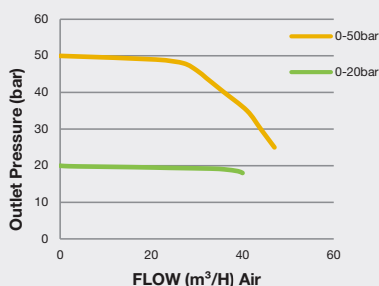
* Subject to cylinder connection ** Cylinder connection not included

👍 SPECIFICATION

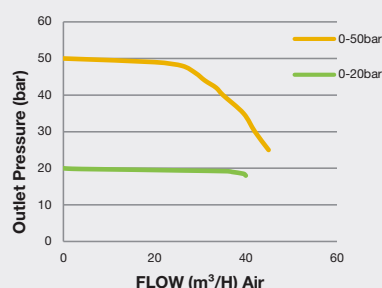
Maximum Inlet Pressure	300 bar (4350 PSI)*
Delivery Pressure Range	20 bar (300 PSI) / 50 bar (725 PSI)
Gauges	50mm (2") Diameter
Ports	1/4" NPT Female
Temperature Range	-20° C to +60° C (-4° F to +140° F)
Flow Coefficient (Cv)	0.079
Helium leak Integrity	1 x 10 ⁻⁹ mbar l/s
Weight	2.0 kg (4.4 lb)**

✓ FLOW PERFORMANCE

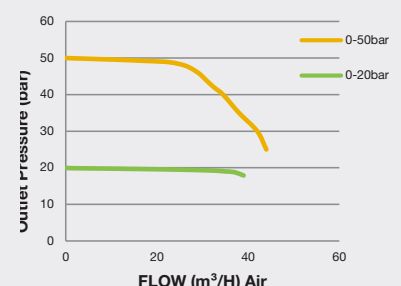
300 bar Inlet Pressure @ 21° C



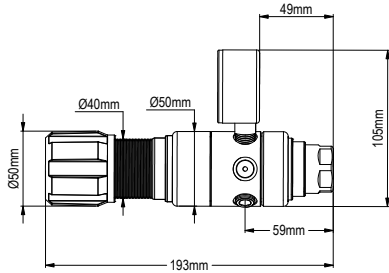
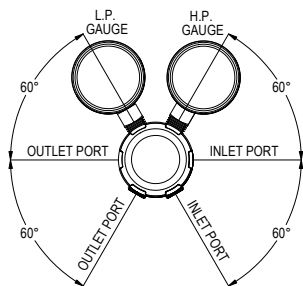
200 bar Inlet Pressure @ 21° C



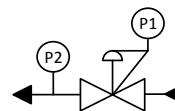
100 bar Inlet Pressure @ 21° C



DIMENSIONS



PROCESS & INSTRUMENTATION



- Adjustable Pressure Regulator with P1 Pressure Gauge



- P2 Pressure Gauge

Model No. Selector Guide

Product Type	Inlet Pressure	Outlet Pressure	Inlet Pressure Gauge	Outlet Pressure Gauge	Inlet/Cylinder Connection	Outlet Connection	Options
HPT621	02 60 bar / 870 PSI	07 -1 - 20 bar / 300 PSIG	00 No Gauge Fitted	00 No Gauge Fitted	000 No outlet fitted	00 No Outlet Fitted	A No Options Selected
HPT622	04 300 bar / 4350 PSI	10 -1 - 50 bar / 725 PSIG	01 bar/PSI 10 Plugged Port	01 bar/PSI 10 Plugged Port	001 1/8 Stainless Steel Compression 002 1/4 Stainless Steel Compression 003 6mm Stainless Steel Compression 004 1/4 NPT Male 007 G3/8 BSP R/H Brass Male 008 G3/8 BSP L/H Brass Male 010 BS341 No.3 012 BS341 No.4 015 BS341 No.8 030 DIN477 No.6 033 DIN477 No.9 034 DIN477 No. 10 045 CGA320 052 CGA540 053 CGA580	01 1/8 Stainless Steel Compression 02 1/4 Stainless Steel Compression 03 6mm Stainless Steel Compression 04 1/4 NPT Male 07 G3/8 BSP R/H Brass Male 08 G3/8 BSP L/H Brass Male 09 Isolation Valve, 1/4 NPT Female, FKM Seal 10 Isolation Valve, 1/4 NPT Female, EPDM Seal 11 Isolation Valve, 1/8 Stainless Steel Compression, FKM Seal 12 Isolation Valve, 1/8 Stainless Steel Compression, EPDM Seal 13 Isolation Valve, 1/4 Stainless Steel Compression, FKM Seal 14 Isolation Valve, 1/4 Stainless Steel Compression, EPDM Seal 15 Isolation Valve, 6mm Stainless Steel Compression, FKM Seal 16 Isolation Valve, 6mm Stainless Steel Compression, EPDM Seal 17 Isolation Valve, 1/4 NPT Male, FKM Seal 18 Isolation Valve, 1/4 NPT Male, EPDM seal 19 Isolation Valve, G3/8 BSP R/H Brass Male, FKM Seal 20 Isolation Valve, G3/8 BSP R/H Brass Male, EPDM Seal 21 Isolation Valve, G3/8 BSP L/H Brass Male, FKM Seal 22 Isolation Valve, G3/8 BSP L/H Brass Male, EPDM Seal	B Regular Tee Purge FKM C Regular Tee Purge EPDM F Bonnet Vent Capture Kit G Helium Test Certificate K Certificate of Conformity L Panel Mount Locking Nut Kit P Calibration / Pressure Test Certificate X Special Instruction
					For our complete range of cylinder connections refer to 'Cylinder Connections Data'		