

GASARC™

AN ESAB® BRAND



TECH MASTER GPL400 SERIES

4.5 Purity Single Stage Brass Barstock Diaphragm Line Regulator

Tech Master GPL400 series single stage diaphragm line regulators are designed for secondary pressure gas control of non-corrosive or toxic, technical gases up to grade 4.5 purity (99.995%), on gas distribution systems.

■ **GPL400 Series** | Single Stage Diaphragm Line Regulator

★ FEATURES

- Four port configuration
- Rear panel mounting capabilities
- Encapsulated seat design
- Low wetted surface area
- Full range of inlet and outlet fittings

📄 MATERIALS

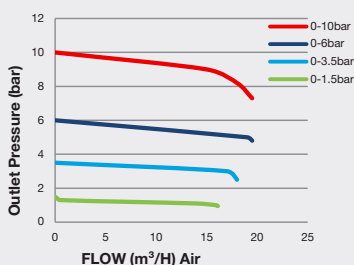
Body	Brass Barstock
Bonnet	High Strength Alloy
Diaphragm	Polychloroprene (Neoprene®) (CR)
Seat	Polyamide (Nylon®)
Filter	10 Micron 316L Stainless Steel

👍 SPECIFICATION

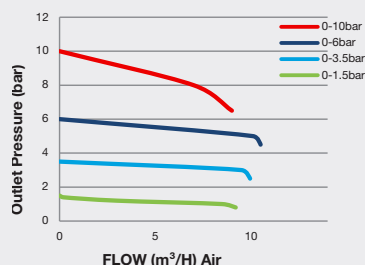
Maximum Inlet Pressure	60 bar (870 PSI)
Delivery Pressure Range	1.5 bar (22 PSI) / 3.5 bar (50 PSI) / 6 bar (90 PSI) / 10 bar (150 PSI)
Gauges	50mm (2") Diameter
Ports	1/4" NPT Female
Temperature Range	-20° C to +60° C (-4° F to +140° F)
Flow Coefficient (Cv)	0.1
Weight	1.1 kg (2.5 lb)

✓ FLOW PERFORMANCE

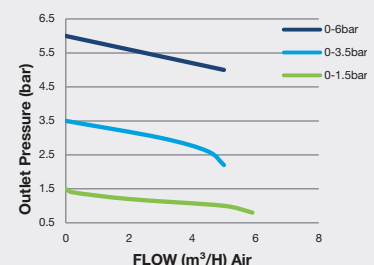
20 bar Inlet Pressure @ 21° C



10 bar Inlet Pressure @ 21° C

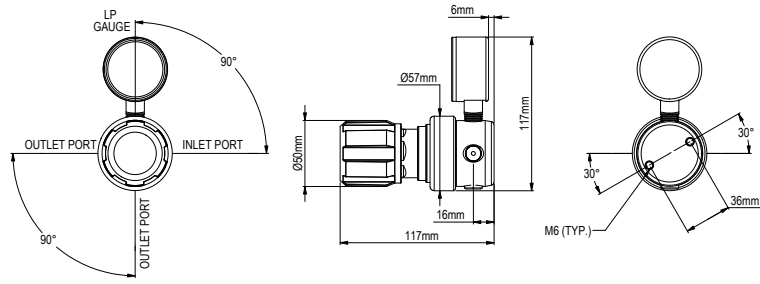


6 bar Inlet Pressure @ 21° C

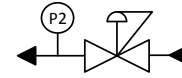




DIMENSIONS



PROCESS & INSTRUMENTATION



- Adjustable Pressure Regulator



- P2 Pressure Gauge

Model No. Selector Guide

Product Type	Inlet Pressure	Outlet Pressure	Inlet Pressure Gauge	Outlet Pressure Gauge	Inlet Connection	Outlet Connection	Options
GPL400	02 60 bar / 870 PSIG	02 -1 - 1.5 bar / 22 PSIG	00 No Gauge Fitted	00 No Gauge Fitted	000 No Inlet Fitted	00 No Outlet Fitted	A No Options Selected
		03 -1 - 3.5 bar / 50 PSIG		01 bar/PSI	001 1/8 Stainless Steel Compression	01 1/8 Stainless Steel Compression	K Certificate of Conformity
		04 -1 - 6 bar / 90 PSIG		10 Plugged Port	002 1/4 Stainless Steel Compression	02 1/4 Stainless Steel Compression	P Calibration / Pressure Test Certificate
		05 -1 - 10 bar / 150 PSIG			003 6mm Stainless Steel Compression	03 6mm Stainless Steel Compression	X Special Instruction
					004 1/4 NPT Male	04 1/4 NPT Male	
					006 G1/2 BSP R/H Brass Male	05 1/4 SAE Flare Brass Male	
					007 G3/8 BSP R/H Brass Male	06 G1/2 BSP R/H Brass Male	
					008 G3/8 BSP L/H Brass Male	07 G3/8 BSP R/H Brass Male	
						08 G3/8 BSP L/H Brass Male	
						09 Isolation Valve, 1/4 NPT Female, FKM Seal	
						10 Isolation Valve, 1/4 NPT Female, EPDM Seal	
						11 Isolation Valve, 1/8 Stainless Steel Compression, FKM Seal	
						12 Isolation Valve, 1/8 Stainless Steel Compression, EPDM Seal	
						13 Isolation Valve, 1/4 Stainless Steel Compression, FKM Seal	
						14 Isolation Valve, 1/4 Stainless Steel Compression, EPDM Seal	
						15 Isolation Valve, 6mm Stainless Steel Compression, FKM Seal	
						16 Isolation Valve, 6mm Stainless Steel Compression, EPDM Seal	
						17 Isolation Valve, 1/4 NPT Male, FKM Seal	
						18 Isolation Valve, 1/4 NPT Male, EPDM seal	
						19 Isolation Valve, G3/8 BSP R/H Brass Male, FKM Seal	
						20 Isolation Valve, G3/8 BSP R/H Brass Male, EPDM Seal	
						21 Isolation Valve, G3/8 BSP L/H Brass Male, FKM Seal	
					22 Isolation Valve, G3/8 BSP L/H Brass Male, EPDM Seal		

GASARC™

AN ESAB® BRAND



TECH MASTER GPL410 SERIES

4.5 Purity Single Stage Brass Barstock Diaphragm Line Regulator - Acetylene

Tech Master GPL410 series single stage diaphragm line regulators are designed for secondary pressure gas control of technical grade Acetylene gas up to 4.5 purity (99.995%), on gas distribution systems.

- **GPL410 Series** | Single Stage Diaphragm Line Regulator - Acetylene

★ FEATURES

- Four port configuration
- Rear panel mounting capabilities
- Encapsulated seat design
- Low wetted surface area
- Full range of inlet and outlet fittings

📄 MATERIALS

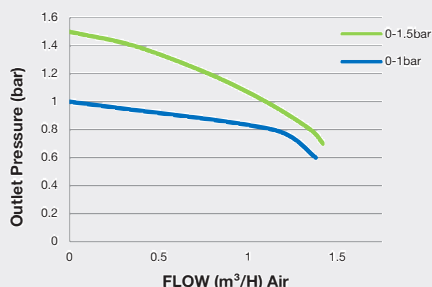
Body	Brass Barstock
Bonnet	High Strength Alloy
Diaphragm	Polychloroprene (Neoprene®) (CR)
Seal	Polyamide (Nylon®)
Filter	10 Micron 316L Stainless Steel

👍 SPECIFICATION

Maximum Inlet Pressure	25 bar (360 PSI)
Delivery Pressure Range	1 bar (15 PSI) / 1.5 bar (22 PSI)
Gauges	50mm (2") Diameter
Ports	1/4" NPT Female
Temperature Range	-20° C to +60° C (-4° F to +140° F)
Flow Coefficient (Cv)	0.1
Weight	1.1 kg (2.5 lb)

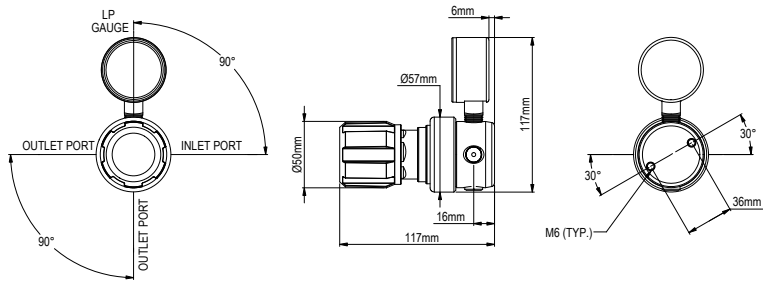
✓ FLOW PERFORMANCE

1.5 bar Inlet Pressure @ 21° C

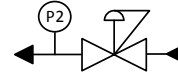




DIMENSIONS



PROCESS & INSTRUMENTATION



- Adjustable Pressure Regulator



- P2 Pressure Gauge

Model No. Selector Guide

Product Type	Inlet Pressure	Outlet Pressure	Inlet Pressure Gauge	Outlet Pressure Gauge	Inlet Connection	Outlet Connection	Options
GPL410	01 25 bar / 360 PSI	01 -1 - 1 bar / 15 PSI	00 No Gauge Fitted	00 No Gauge Fitted	000 No Inlet Fitted	00 No Outlet Fitted	A No Options Selected
		02 -1 - 1.5 bar / 22 PSI		01 bar/PSI	001 1/8 Stainless Steel Compression	01 1/8 Stainless Steel Compression	K Certificate of Conformity
				10 Plugged Port	002 1/4 Stainless Steel Compression	02 1/4 Stainless Steel Compression	p Calibration / Pressure Test Certificate
					003 6mm Stainless Steel Compression	03 6mm Stainless Steel Compression	X Special Instruction
					004 1/4 NPT Male	04 1/4 NPT Male	
					008 G3/8 BSP L/H Brass Male	08 G3/8 BSP L/H Brass Male	
						10 Isolation Valve, 1/4 NPT Female, EPDM Seal	
						12 Isolation Valve, 1/8 Stainless Steel Compression, EPDM Seal	
						14 Isolation Valve, 1/4 Stainless Steel Compression, EPDM Seal	
						16 Isolation Valve, 6mm Stainless Steel Compression, EPDM Seal	
			18 Isolation Valve, 1/4 NPT Male, EPDM seal				
			22 Isolation Valve, G3/8 BSP L/H Brass Male, EPDM Seal				

GASARC™

AN ESAB® BRAND



TECH MASTER GPL420 SERIES

4.5 Purity Single Stage Brass Barstock Piston Line Regulator

Tech Master GPL420 series single stage piston line regulators are designed for secondary pressure gas control of non-corrosive or toxic, technical grade gases up to grade 4.5 purity (99.995%), on gas distribution systems.

- **GPL421 Series** | Single Stage Piston Line Regulator, FKM Seal
- **GPL422 Series** | Single Stage Piston Line Regulator, EPDM Seal

★ FEATURES

- Four port configuration
- Front & rear panel mounting capabilities
- Encapsulated seat design
- Low wetted surface area
- Full range of inlet and outlet fittings
- Side entry

📄 MATERIALS

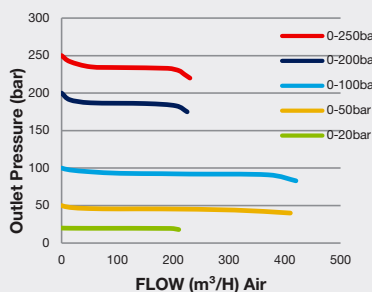
Body	Brass Barstock
Bonnet	Brass Barstock
Piston	Brass
Seal	FKM / EPDM
Seat	Polyamide (Nylon®)
Filter	10 Micron 316L Stainless Steel

👍 SPECIFICATION

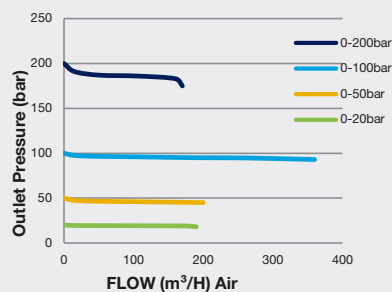
Maximum Inlet Pressure	300 bar (4350 PSI)
Delivery Pressure Range	20 bar (300 PSI) / 50 bar (725 PSI) / 100 bar (1450 PSI) / 200 bar (2900 PSI) / 250 bar (3630 PSI)
Gauges	50mm (2") Diameter
Ports	1/4" NPT Female
Temperature Range	-20° C to +60° C (-4° F to +140° F)
Flow Coefficient (Cv)	0.1
Weight	1.4 kg (3.1 lb)

✓ FLOW PERFORMANCE

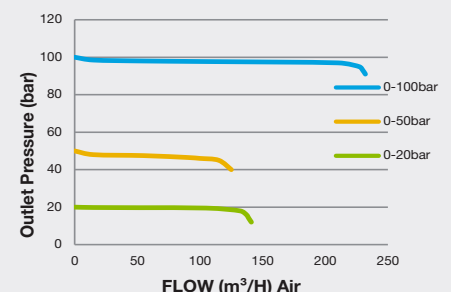
300 bar Inlet Pressure @ 21° C



200 bar Inlet Pressure @ 21° C

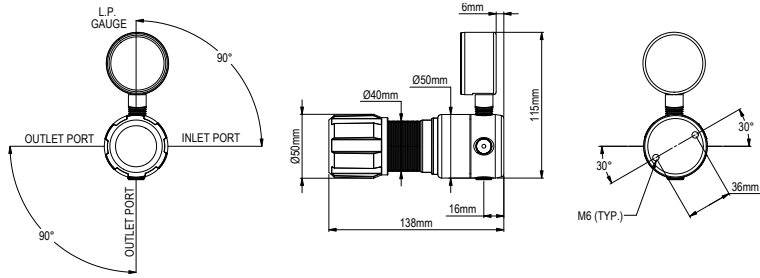


100 bar Inlet Pressure @ 21° C

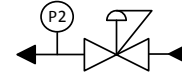




DIMENSIONS



PROCESS & INSTRUMENTATION



- Adjustable Pressure Regulator



- P2 Pressure Gauge

Model No. Selector Guide

Product Type	Inlet Pressure	Outlet Pressure	Inlet Pressure Gauge	Outlet Pressure Gauge	Inlet Connection	Outlet Connection	Options
GPL421	04 300 bar / 4350 PSI	07 - 1 -20 bar / 300 PSI	00 No Gauge Fitted	00 No Gauge Fitted	000 No Inlet Fitted	00 No Outlet Fitted	A No Options Selected
GPL422		10 - 1 -50 bar / 725 PSI		01 Bar/PSI	001 1/8 Stainless Steel Compression	01 1/8 Stainless Steel Compression	F Bonnet Vent Kit
		11 0 - 100 bar / 1450 PSI		10 Plugged Port	002 1/4 Stainless Steel Compression	02 1/4 Stainless Steel Compression	K Certificate of Conformity
		12 0 - 200 bar / 2900 PSI			003 6mm Stainless Steel Compression	03 6mm Stainless Steel Compression	L Panel Mount Locking Nut Kit
		13 0 - 250 bar / 3630 PSI			004 1/4 NPT Male	04 1/4 NPT Male	P Calibration / Pressure Test Certificate
					007 G3/8 BSP R/H Brass Male	05 1/4 SAE Flare Brass Male	X Special Instruction
					008 G3/8 BSP L/H Brass Male	06 G1/2 BSP R/H Brass Male	
						07 G3/8 BSP R/H Brass Male	
						08 G3/8 BSP L/H Brass Male	
						09 Isolation Valve, 1/4 NPT Female, FKM Seal	
						10 Isolation Valve, 1/4 NPT Female, EPDM Seal	
						11 Isolation Valve, 1/8 Stainless Steel Compression, FKM Seal	
						12 Isolation Valve, 1/8 Stainless Steel Compression, EPDM Seal	
						13 Isolation Valve, 1/4 Stainless Steel Compression, FKM Seal	
						14 Isolation Valve, 1/4 Stainless Steel Compression, EPDM Seal	
						15 Isolation Valve, 6mm Stainless Steel Compression, FKM Seal	
						16 Isolation Valve, 6mm Stainless Steel Compression, EPDM Seal	
						17 Isolation Valve, 1/4 NPT Male, FKM Seal	
						18 Isolation Valve, 1/4 NPT Male, EPDM seal	
						19 Isolation Valve, G3/8 BSP R/H Brass Male, FKM Seal	
						20 Isolation Valve, G3/8 BSP R/H Brass Male, EPDM Seal	
						21 Isolation Valve, G3/8 BSP L/H Brass Male, FKM Seal	
						22 Isolation Valve, G3/8 BSP L/H Brass Male, EPDM Seal	