

GASARC™

AN ESAB® BRAND



TECH MASTER GPP400 SERIES

4.5 Purity Single Stage Brass Barstock Diaphragm Outlet Point Regulator

Tech Master GPP400 series single stage diaphragm outlet point regulators are designed for secondary pressure gas control of non-corrosive or toxic, technical grade gases up to grade 4.5 purity (99.995%), on gas distribution systems.

- **GPP400 Series** | Single Stage Diaphragm Outlet Point Regulator

★ FEATURES

- Three port configuration
- Rear point mounting (1/4 NPT male)
- Encapsulated seat design
- Low wetted surface area
- Full range of outlet fittings
- Rear entry

📄 MATERIALS

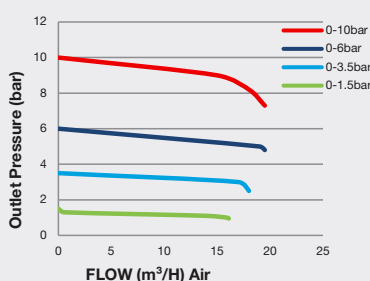
Body	Brass Barstock
Bonnet	High Strength Alloy
Diaphragm	Polychloroprene (Neoprene®) (CR)
Seat	Polyamide (Nylon®)
Filter	10 Micron 316L Stainless Steel

👍 SPECIFICATION

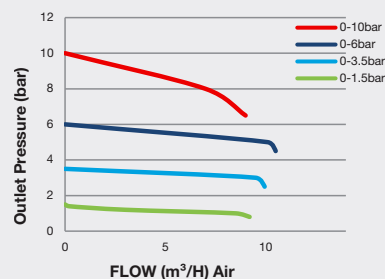
Maximum Inlet Pressure	60 bar (870 PSI)
Delivery Pressure Range	1.5 bar (22 PSI) / 3.5 bar (50 PSI) / 6 bar (90 PSI) / 10 bar (150 PSI)
Gauges	50mm (2") Diameter
Ports	1/4" NPT Female
Temperature Range	-20° C to +60° C (-4° F to +140° F)
Flow Coefficient (Cv)	0.1
Weight	1.1 kg (2.5 lb)

✓ FLOW PERFORMANCE

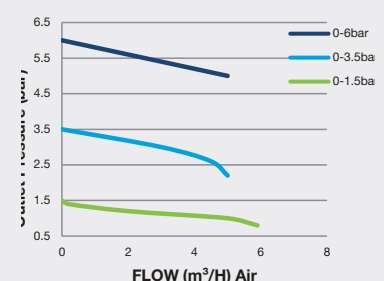
20 bar Inlet Pressure @ 21° C



10 bar Inlet Pressure @ 21° C

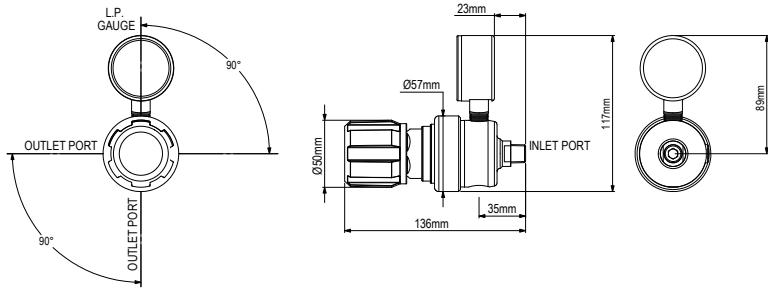


6 bar Inlet Pressure @ 21° C

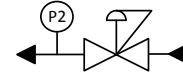




DIMENSIONS



PROCESS & INSTRUMENTATION



- Adjustable Pressure Regulator



- P2 Pressure Gauge

Model No. Selector Guide

Product Type	Inlet Pressure	Outlet Pressure	Inlet Pressure Gauge	Outlet Pressure Gauge	Inlet Connection	Outlet Connection	Options
GPP400	02 60 bar / 870 PSI	02 -1 - 1.5 bar / 22 PSIG	00 No Gauge Fitted	00 No Gauge Fitted	004 1/4 NPT Male	00 No Outlet Fitted	A No Options Selected
		03 -1 - 3.5 bar / 50 PSIG		01 bar/PSI		01 1/8 Stainless Steel Compression	K Certificate of Conformity
		04 -1 - 6 bar / 90 PSIG		10 Plugged Port		02 1/4 Stainless Steel Compression	P Calibration / Pressure Test Certificate
		05 -1 - 10 bar / 150 PSIG		03 6mm Stainless Steel Compression		03 6mm Stainless Steel Compression	X Special Instruction
		04 1/4 NPT Male					
		05 1/4 SAE Flare Brass Male					
		06 G1/2 BSP R/H Brass Male					
		07 G3/8 BSP R/H Brass Male					
		08 G3/8 BSP L/H Brass Male					
		09 Isolation Valve, 1/4 NPT Female, FKM Seal					
		10 Isolation Valve, 1/4 NPT Female, EPDM Seal					
		11 Isolation Valve, 1/8 Stainless Steel Compression, FKM Seal					
		12 Isolation Valve, 1/8 Stainless Steel Compression, EPDM Seal					
		13 Isolation Valve, 1/4 Stainless Steel Compression, FKM Seal					
		14 Isolation Valve, 1/4 Stainless Steel Compression, EPDM Seal					
		15 Isolation Valve, 6mm Stainless Steel Compression, FKM Seal					
		16 Isolation Valve, 6mm Stainless Steel Compression, EPDM Seal					
		17 Isolation Valve, 1/4 NPT Male, FKM Seal					
		18 Isolation Valve, 1/4 NPT Male, EPDM Seal					
		19 Isolation Valve, G3/8 BSP R/H Brass Male, FKM Seal					
		20 Isolation Valve, G3/8 BSP R/H Brass Male, EPDM Seal					
21 Isolation Valve, G3/8 BSP L/H Brass Male, FKM Seal							

GASARC™

AN ESAB® BRAND



TECH MASTER GPP410 SERIES

4.5 Purity Single Stage Brass Barstock Diaphragm Outlet Point Regulator - Acetylene

Tech Master GPP410 series single stage diaphragm outlet point regulators are designed for secondary pressure gas control of technical grade Acetylene gas up to 4.5 purity (99.995%), on gas distribution systems.

- **GPP410 Series** | Single Stage Diaphragm Outlet Point Regulator - Acetylene

★ FEATURES

- Three port configuration
- Rear point mounting (1/4 NPT male)
- Encapsulated seat design
- Low wetted surface area
- Full range of outlet fittings
- Rear entry

📄 MATERIALS

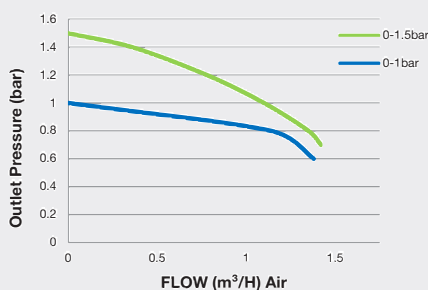
Body	Brass Barstock
Bonnet	High Strength Alloy
Diaphragm	Polychloroprene (Neoprene®) (CR)
Seat	Polyamide (Nylon®)
Filter	10 Micron 316L Stainless Steel

👍 SPECIFICATION

Maximum Inlet Pressure	25 bar (360 PSI)
Delivery Pressure Range	1 bar (15 PSI) / 1.5 bar (22 PSI)
Gauges	50mm (2") Diameter
Ports	1/4" NPT Female
Temperature Range	-20° C to +60° C (-4° F to +140° F)
Flow Coefficient (Cv)	0.1
Weight	1.1 kg (2.5 lb)

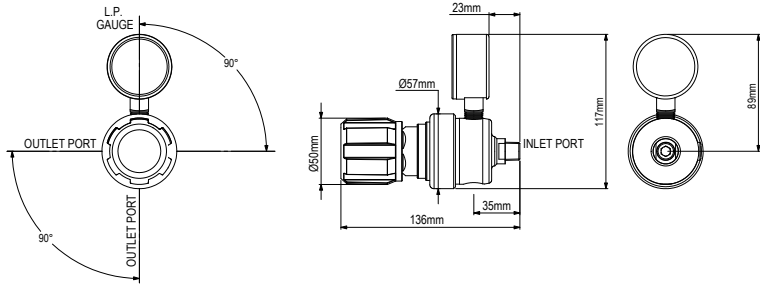
✓ FLOW PERFORMANCE

1.5 bar Inlet Pressure @ 21° C

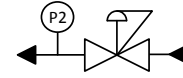




DIMENSIONS



PROCESS & INSTRUMENTATION



- Adjustable Pressure Regulator



- P2 Pressure Gauge

Model No. Selector Guide

Product Type	Inlet Pressure	Outlet Pressure	Inlet Pressure Gauge	Outlet Pressure Gauge	Inlet/Cylinder Connection	Outlet Connection	Options
GPP410	01 25 bar / 360 PSI	01 -1 - 1 bar / 15 PSIG	00 No Gauge Fitted	00 No Gauge Fitted	004 1/4 NPT Male	00 No Outlet	A No Options Selected
		02 -1 - 1.5 bar / 22 PSIG		01 bar/PSI		01 1/8 Stainless Steel Compression	K Certificate of Conformity
				10 Plugged Port		02 1/4 Stainless Steel Compression	P Calibration / Pressure Test Certificate
						03 6mm Stainless Steel Compression	X Special Instruction
						04 1/4 NPT Male	
						05 1/4 SAE Flare Brass Male	
						08 G3/8 BSP L/H Brass Male	
						10 Isolation Valve, 1/4 NPT Female, EPDM Seal	
						12 Isolation Valve, 1/8 Stainless Steel Compression, EPDM Seal	
						14 Isolation Valve, 1/4 Stainless Steel Compression, EPDM Seal	
						16 Isolation Valve, 6mm Stainless Steel Compression, EPDM Seal	
						18 Isolation Valve, 1/4 NPT Male, EPDM Seal	
						22 Isolation Valve, G3/8 BSP L/H Brass Male, EPDM Seal	